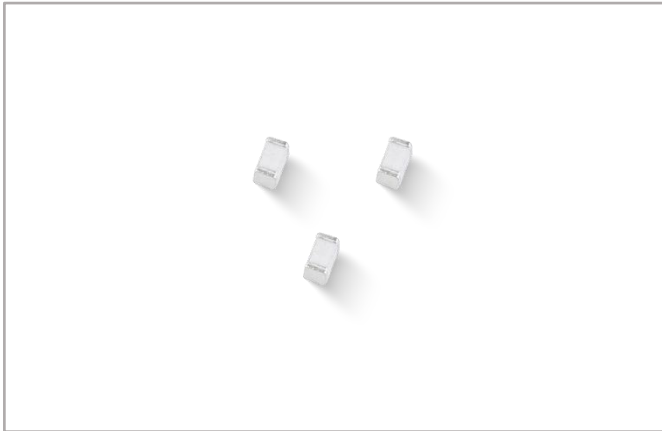


# 2R-E Series

## Gas Discharge Tubes



### Description

GDT (Gas Discharge Tubes) is placed in front of, and in parallel with, sensitive telecom equipment such as power lines, communication lines, signal lines and data transmission lines to help protect them from damage caused by transient surge voltages that may result from lightning strikes and equipment switching operations. These devices do not influence the signal in normal operation. However, in the event of an overvoltage surge, such as a lightning strike, the GDT switches to a low impedance state and diverts the energy away from the sensitive equipment. Our GDTs offer a high level of surge protection, a broad voltage range, low capacitance, and many form factors including new surface mount devices, which makes them suitable for applications such as Main Distribution Frame (MDF) modules, high data-rate telecom applications (e.g. ADSL, VDSL), and surge protection on power lines. Their low capacitance also results in less signal distortion. When used in a coordinated circuit protection solution with PolySwitch devices, they can help equipment manufacturers meet stringent safety regulatory standards.

### Additional Information



Resources



Accessories



Samples

### Agency Approvals

Agency	Agency File Number
	E527857

### Features

- Stable breakdown voltage
- High insulation resistance
- High current rating
- Low capacitance ( $\leq 0.5\text{pF}$ )
- Stable performance over life
- Large absorbing transient current capability
- Fast response time
- RoHS compliant
- Standard Size: 3.2mm\*1.6mm\*1.6mm
- Meets MSL level 1, per J-STD-020
- Storage and operating temperature:  $-40^{\circ}\text{C} \sim +90^{\circ}\text{C}$

### Application

- Repeaters, Modems
- Subscriber protection
- Telephone Interface, Line cards
- Data communication equipment
- Line test equipment
- Branch exchange
- Subscriber protection
- Alarm system
- Tuner
- Antenna protection


### 2 Electrode GDT Graphical Symbol



# 2R-E Series

## Gas Discharge Tubes

### Electrical Characteristics ( $T_A=25^{\circ}\text{C}$ unless otherwise noted)

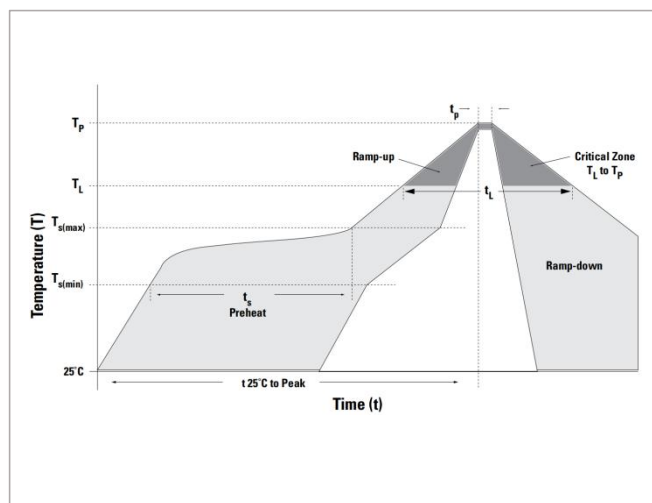
Part Number	Device Marking Code	DC Spark-over Voltage	Maximum Impulse Spark-over Voltage	Nominal Impulse Discharge Current	Minimum Insulation Resistance		Maximum Capacitance	Agency Approvals 
		100V/s (V)	1000V/ $\mu\text{s}$ (V)	8/20 $\mu\text{s}$ , 10 times (kA)	Test Voltage	G $\Omega$	1MHz (pF)	
2R090SM-E	None	90 $\pm$ 30%	750	0.5	50VDC	1	0.5	✓
2R150SM-E	None	150 $\pm$ 30%	750	0.5	50VDC	1	0.5	✓
2R200SM-E	None	200 $\pm$ 30%	850	0.5	100VDC	1	0.5	✓
2R230SM-E	None	230 $\pm$ 30%	850	0.5	100VDC	1	0.5	✓
2R300SM-E	None	300 $\pm$ 30%	900	0.5	100VDC	1	0.5	✓
2R350SM-E	None	350 $\pm$ 30%	950	0.5	100VDC	1	0.5	✓
2R400SM-E	None	400 $\pm$ 30%	1000	0.5	100VDC	1	0.5	✓
2R420SM-E	None	420 $\pm$ 30%	1000	0.5	100VDC	1	0.5	✓
2R470SM-E	None	470 $\pm$ 30%	1100	0.5	100VDC	1	0.5	✓

### Test Methods and Results

Items	Test Method	Standard
DC Spark-over Voltage	measured with voltage ramp $dv/dt=100\text{V/s}$ .	To meet the specified value
Maximum Impulse Spark-over Voltage	measured with voltage ramp $dv/dt=1000\text{V}/\mu\text{s}$ .	To meet the specified value
Impulse Discharge Current	applied between two electrodes, 5 positive and 5 negative surges, with 3 minutes interval time,	To meet the specified value
Insulation Resistance	measured between two electrodes.	To meet the specified value
Capacitance	measured between two electrodes. Test frequency: 1MHz	To meet the specified value

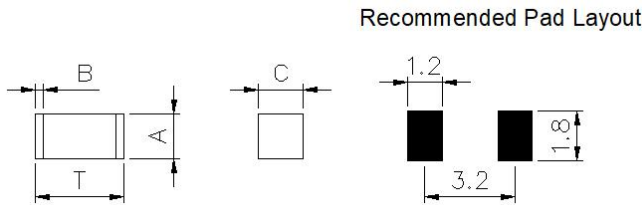
### Soldering Parameters (Reflow Soldering)

Reflow Condition		Pb-Free Assembly
Pre Heat	-Temperature Min ( $T_{S\min}$ )	150 $^{\circ}\text{C}$
	-Temperature Max ( $T_{S\max}$ )	200 $^{\circ}\text{C}$
	-Time (min to max) ( $t_s$ )	60-180 secs
Average ramp-up rate(Liquidus Temp ( $T_L$ ) to peak		3 $^{\circ}\text{C}/\text{second}$ max.
$T_{S(\max)}$ to $T_L$ -Ramp-up Rate		3 $^{\circ}\text{C}/\text{second}$ max.
Reflow	-Temperature ( $T_L$ ) (Liquidus)	217 $^{\circ}\text{C}$
	-Time (min to max) ( $t_L$ )	60-150 seconds
Peak Temperature ( $T_P$ )		260 $^{\circ}\text{C}$
Time within 5 $^{\circ}\text{C}$ of actual Peak Temperature ( $t_P$ )		20-40 seconds
Ramp-down Rate		6 $^{\circ}\text{C}/\text{second}$ max.
Time 25 $^{\circ}\text{C}$ to Peak Temperature		8 minutes max.
Do not exceed		260 $^{\circ}\text{C}$



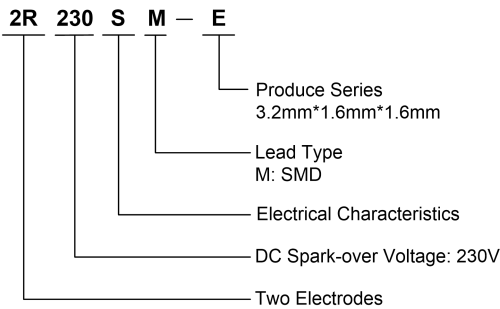
2R-E Series  
Gas Discharge Tubes

Dimensions



Symbol	Millimeters	Inches
T	3.2±0.3	0.126±0.012
A	1.6±0.2	0.063±0.008
B	0.3±0.1	0.012±0.004
C	1.6±0.2	0.063±0.008

Part Numbering System

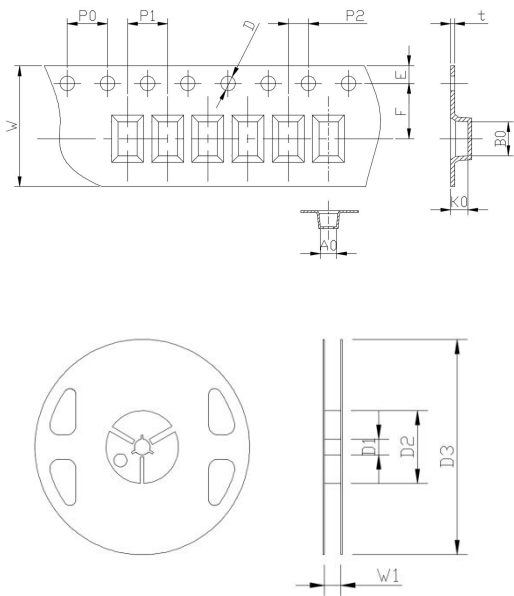


Part Marking System

None

Packaging Specification

Part number	Quantity	Packaging Option
2RxxxSM-E	2500	Tape & Reel - 12mm tape/7" reel



Symbol	Millimeters	Inches
W	12.0±0.2	0.472±0.008
P0	4.0±0.2	0.157±0.008
P1	4.0±0.1	0.157±0.004
P2	2.0±0.1	0.079±0.004
D	1.55±0.1	0.061±0.004
E	1.75±0.1	0.069±0.004
F	5.5±0.1	0.217±0.004
A0	1.9±0.1	0.075±0.004
K0	1.9±0.1	0.075±0.004
B0	3.5±0.1	0.138±0.004
t	0.3±0.1	0.012±0.004
D0	13.0±1.0	0.512±0.039
D1	60.0±2.0	2.362±0.079
D2	178.0±2.0	7.008±0.079
W1	12.5±0.2	0.492±0.008

**Disclaimer Notice** - Information furnished is believed to be accurate and reliable. However, users should independently evaluate the suitability of and test each product selected for their own applications. Liown products are not designed for, and may not be used in, all applications. Read complete Disclaimer Notice at <http://www.liownsemi.com>